



FIRST-TIME OPERATION FOR 4 STROKE MODELS

TIP: YAMALUBE marine oil is the best choice for your Yamaha Outboard Engine.

BREAKING IN ENGINE

Your new engine requires a period of break-in to allow mating surfaces of moving parts to wear in evenly. Correct break-in will help ensure proper performance and longer engine life.

NOTICE: Failure to follow the break-in procedure could result in reduced engine life or even severe engine damage.

Procedure for 4-Stroke models

TIP:

Run the engine in the water, under load (in gear with propeller installed) as allows. For 10 hours for breaking in engine avoid extended, rough water and crowded areas.

1. For the first hour of operation:

⇒ Run the engine at varying speeds up to 2000 r/min or approximately half throttle.

2. For the second hour of operation:

⇒ Increase engine speed as much as necessary to put the boat on plane (but avoid full-throttle operation), then back off on the throttle while keeping the boat at a planing speed.

3. Remaining 8 hours:

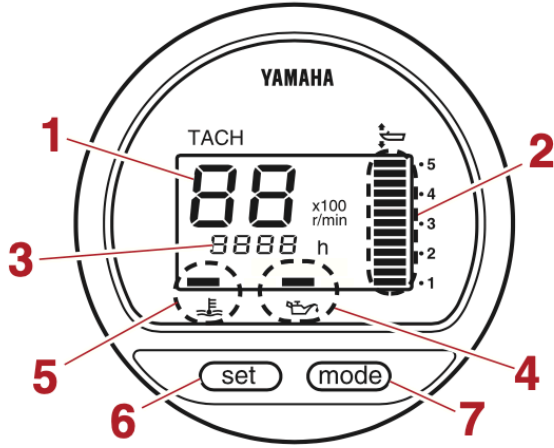
⇒ Run the engine at any speed. However, avoid operating at full throttle for more than 5 minutes at a time.

4. After the first 10 hours:

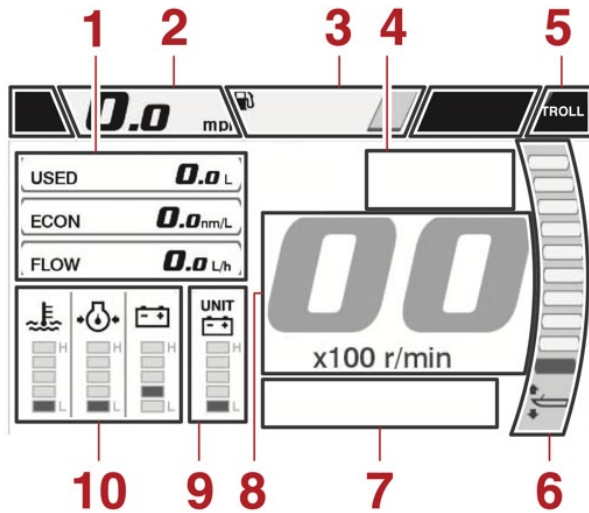
⇒ Operate the engine normally.



INSTRUMENTS AND INDICATORS



1. Tachometer
2. Trim meter
3. Hour meter
4. Low oil pressure-alert indicator
5. Overheat-alert indicator
6. Set button
7. Mode button



1. Boat status
2. Speedometer
3. Tank level
4. Engine condition
5. Trolling mode button
6. Trim angle
7. Engine alert
8. Tachometer
9. Sub status
10. Engine status

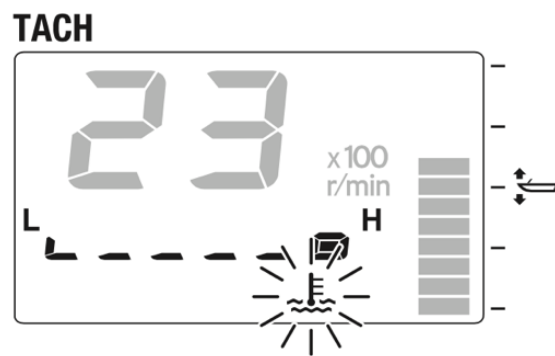
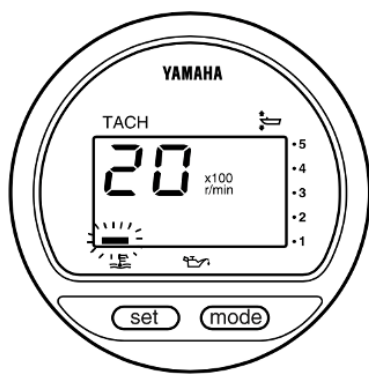


ALERT SYSTEM

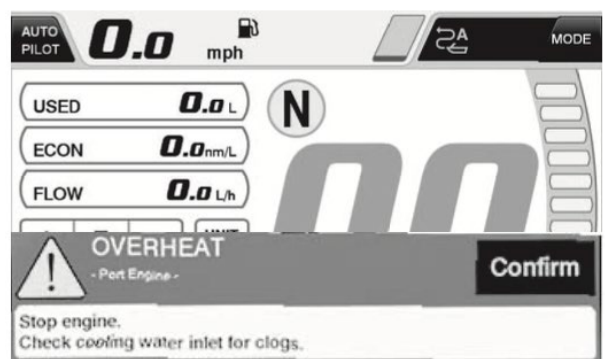
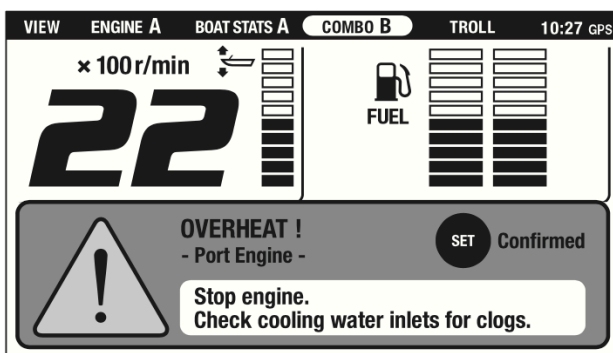
1. Overheat alert

This engine has an overheat-alert device. If the engine temperature rises too high, the alert device will activate.

- The engine speed will automatically decrease to about 2000-3500 r/min.
- The overhead-alert indicator will light or blink.

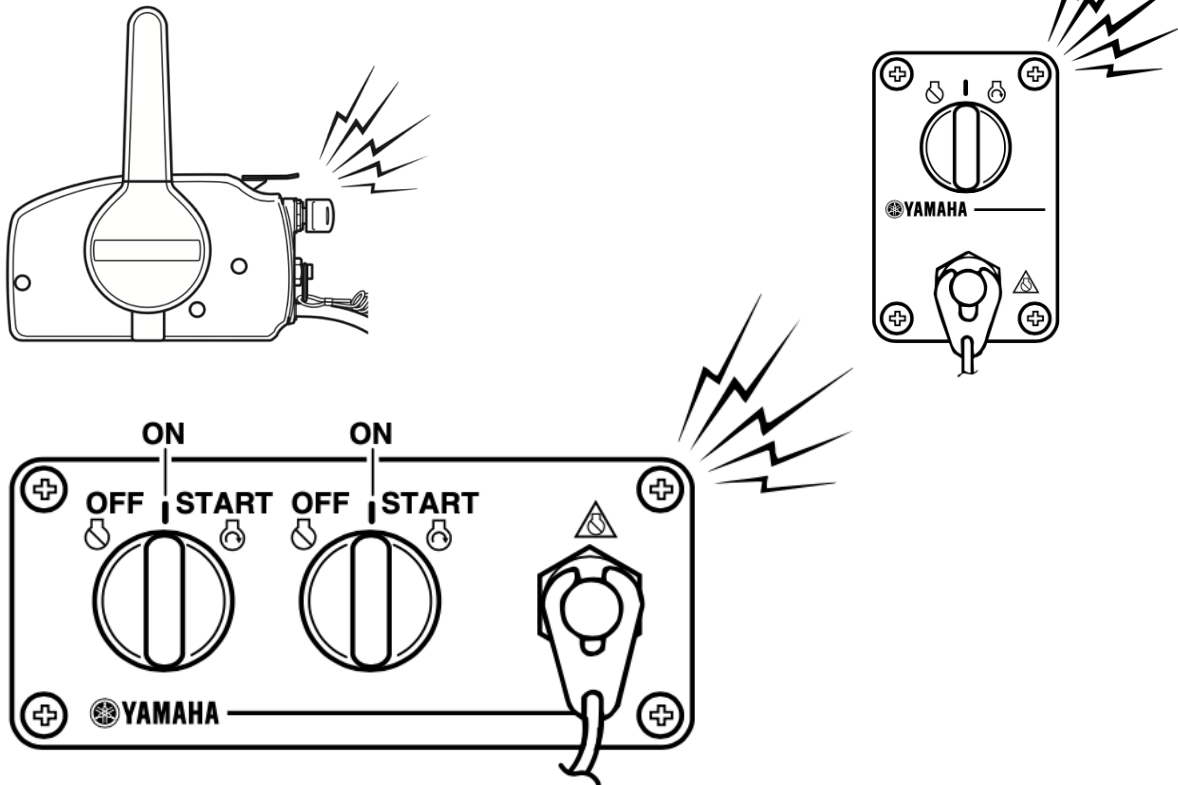


- The pop-up window will appear on the Multi-Display.



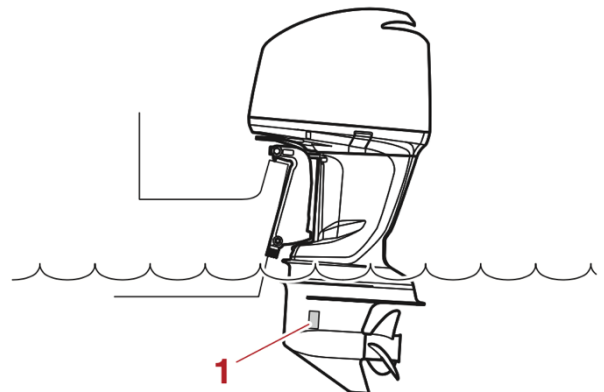


- The buzzer will sound



If the alert system has activated, stop the engine and check the cooling water inlets:

- Check trim angle to be sure that the cooling water inlet (1) is submerged.
- Check the cooling water inlet (1) for clogging.



Twin engine drive users

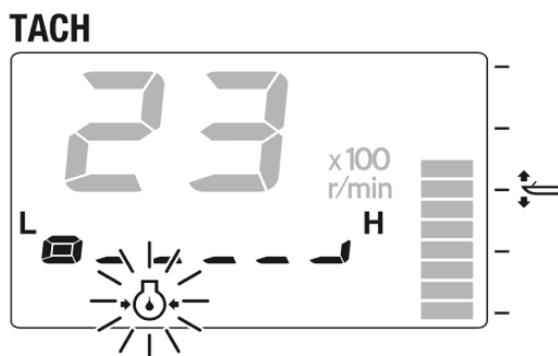
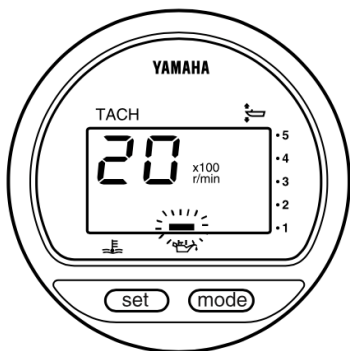
If the overheat alert system of one outboard motor activates, the engine will slow down.



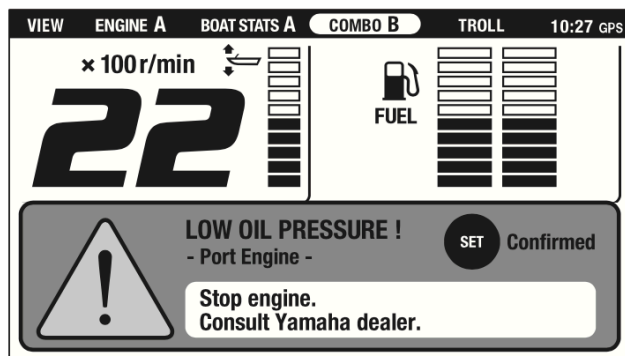
2. Low oil pressure alert:

If the oil pressure drops too low, the alert device will activate.

- The engine speed will automatically decrease to about 2000 – 3500 r/min.
- The low oil pressure-alert indicator will light or blink.

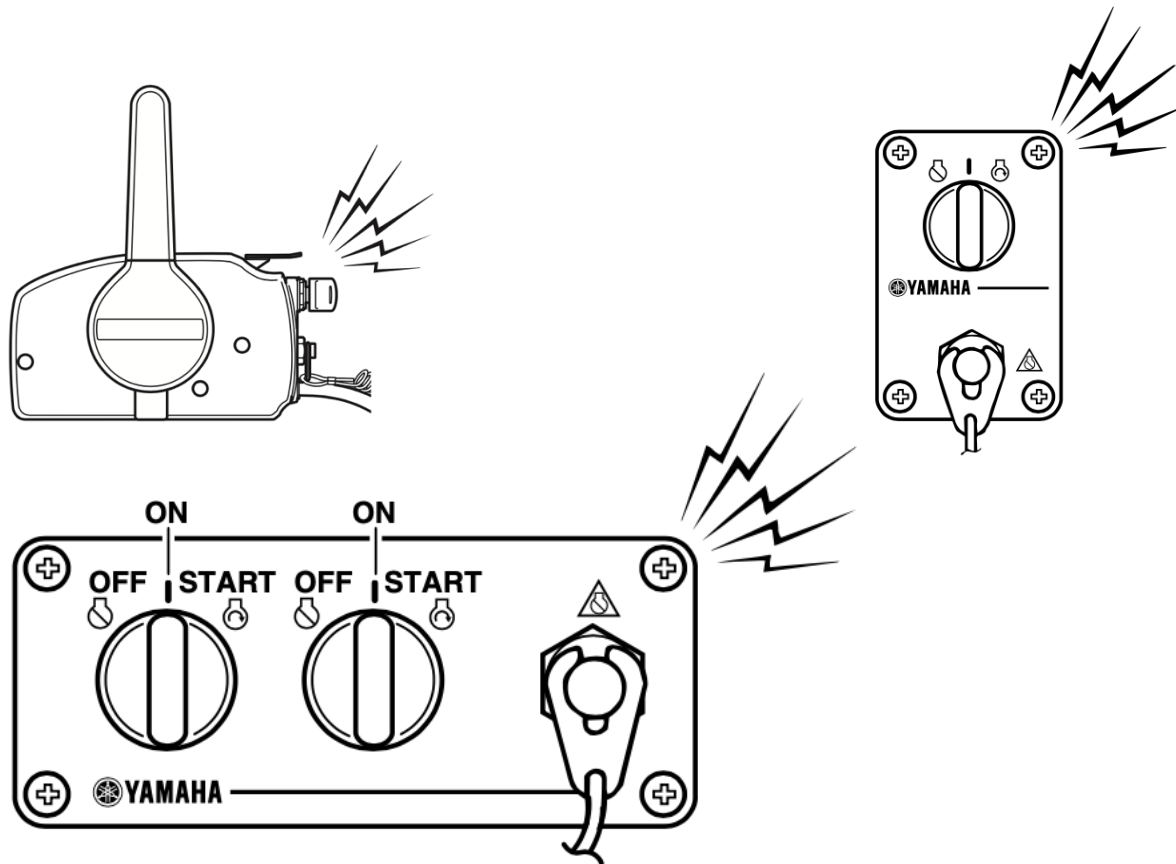


- The pop-up window will appear on the Multi-Display.





- The buzzer will sound



TIP:

If the alert system has activated, stop the engine as soon as it is safe to do so. Check the oil level and add oil as needed. If the oil level is correct and the alert system does not turn off, consult your Yamaha dealer.

Twin engine drive users

If the low oil pressure alert system of one outboard motor activates, all of the engines will slow down and the buzzer will sound.